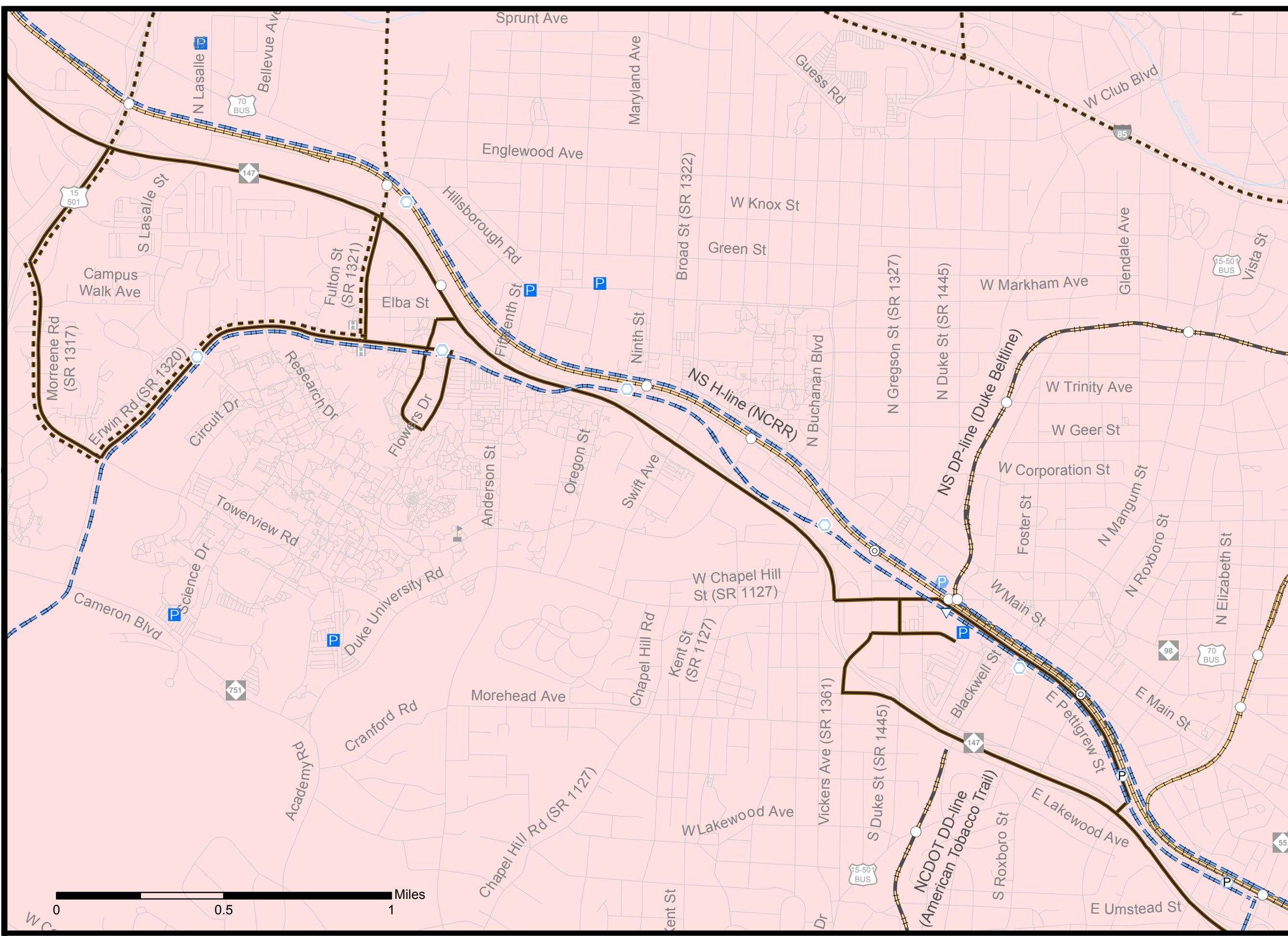
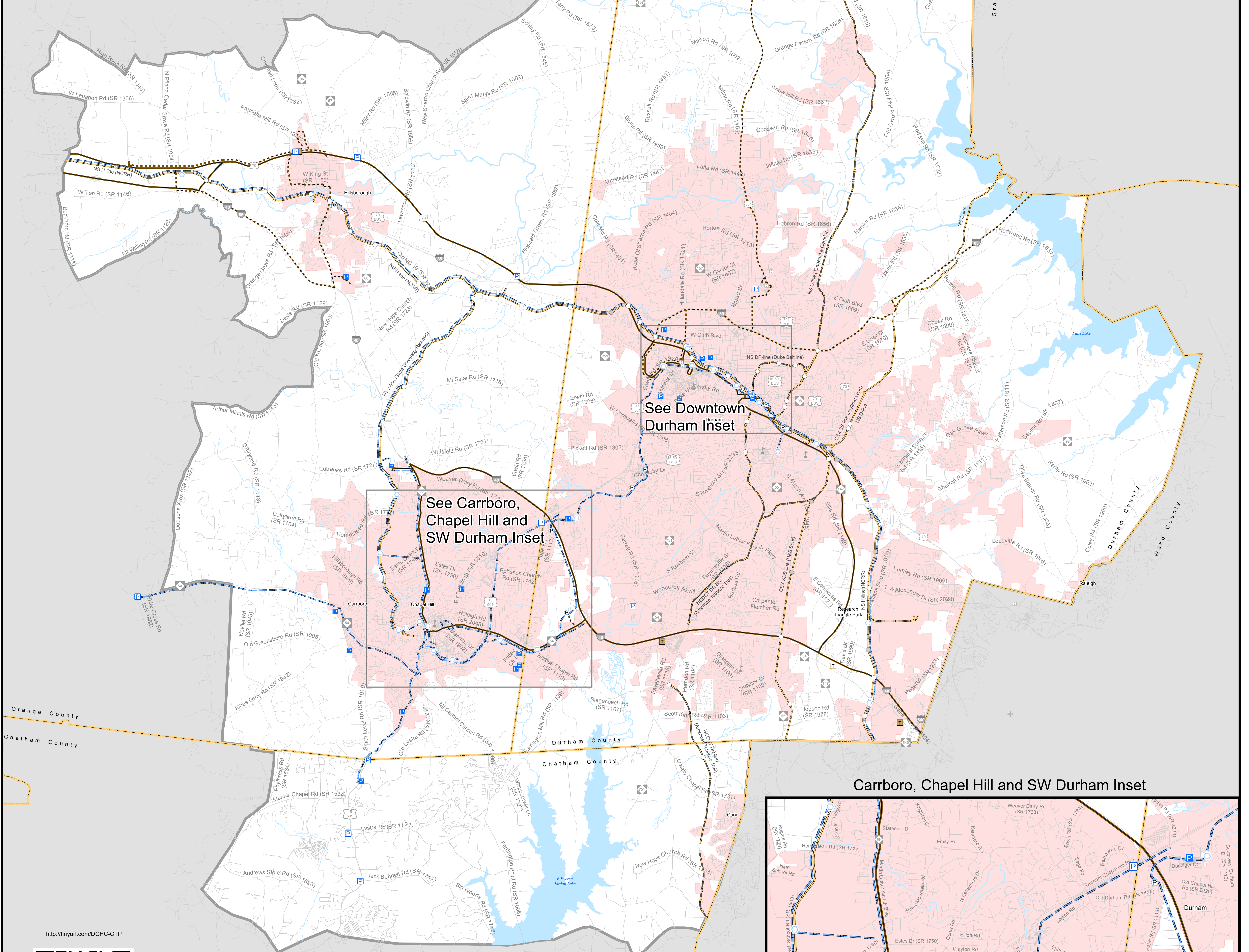


# DCHC MPO - CTP - PUBLIC TRANSPORTATION AND RAIL MAP



Downtown Durham Inset



See Downtown Durham Inset

See Carrboro, Chapel Hill and SW Durham Inset

Carrboro, Chapel Hill and SW Durham Inset

<http://tinyurl.com/DCHC-CTP>



Note: The concepts shown on a CTP are for planning purposes and are subject to change. These concepts will need additional analysis to meet state and federal environmental regulations, to determine final locations and designs, and to be funded for implementation. Local zoning or subdivision ordinances may require the dedication of right of way based on the concepts shown on the CTP and local collector street plans, based on N.C.G.S. § 136-66.2 and § 136-66.10.

Note: For more information on the Durham-Orange Light Rail Transit Project, go to <http://www.ourtransportfuture.com>.

Note: The Strategic Transportation Investments (STI) law (House Bill 617) establishes design elements that emphasize safety, mobility, complete streets, and accessibility for multiple modes of travel. The "typical" highway cross sections used in this CTP were updated on May 5, 2014 in response to STI law.

NCDDOT's Complete Streets Policy "requires that NCDDOT's planners and designers will consider and incorporate multimodal alternatives in the design and improvement of all appropriate transportation projects within a growth area of a town or city unless exceptional circumstances exist." (For more information on Complete Streets, go to <http://www.completestreetsnc.org/>).

|   |   |   |
|---|---|---|
| <b>Fixed Guideway</b><br>Existing<br>Needs Improvement<br>Recommended | <b>Rail Corridor</b><br>Active<br>Inactive<br>Recommended               | <b>Operational Strategies</b><br>Existing<br>Needs Improvement<br>Recommended |
| <b>Multimodal Connector</b><br>Existing<br>Recommended                | <b>Park and Ride Lot</b><br>Existing<br>Recommended                     | <b>Grade Separations</b><br>Existing<br>Needs Improvement<br>Recommended      |
| <b>Rail Stations</b><br>Existing<br>Recommended                       | <b>Rail Stations with Park and Ride Lot</b><br>Existing<br>Recommended  | Hospitals<br>Schools<br>Airports  |
| <b>Transit Center</b><br>Existing<br>Recommended                      | <b>Transit Center with Park and Ride Lot</b><br>Existing<br>Recommended |   |

0 1 2 Miles  
 Sheet 3A of 5  
 Base map date: December 14, 2016  
 Refer to CTP document for more details

**Public Transportation and Rail Map**  
**Durham-Chapel Hill-Carboro MPO**  
**Comprehensive Transportation Plan**  
 Plan date: May 10, 2017

